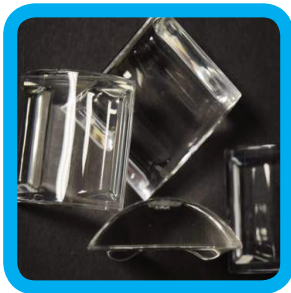




HOSHIZAKI

> KMD-201AB

Daily ice production capacity up to **200 KG**



This KM series ice maker produces clear, crescent shaped ice that is extremely versatile. It includes a double-sided stainless steel evaporator, which requires fewer cycles to produce a full bin of ice, thereby reducing energy consumption.



> Picture with Ice bin B-301SA

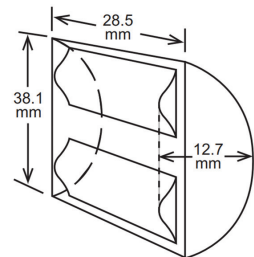
CRESCENT ICE MAKER SERIES

FEATURES

- > Individual premium crescent cube with no ice bridging.
- > Exceptionally hard crystal clear cubes that melt slowly.
- > Slide in air filter at front for easy cleaning maintaining performance efficiency.
- > Double-sided stainless steel evaporator for all water conditions produces more ice in less cycles.
- > Snap in water tank design - easy to remove for sanitization.
- > Durable stainless steel exterior.
- > Low water electrical consumption.
- > Flush mount to rear wall.
- > Good in hard water areas.



ICE SIZE

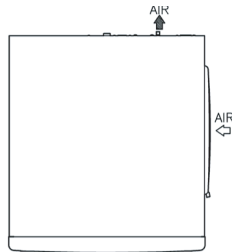


CERTIFICATION

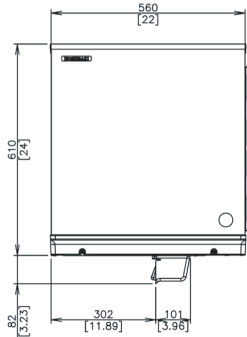


DIMENSIONS & SPECIFICATION

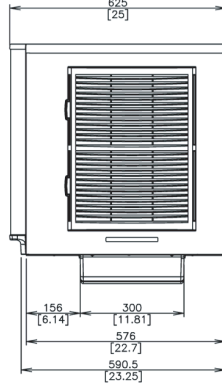
TOP SIDE



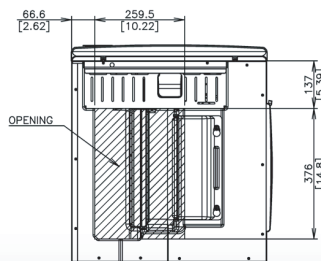
FRONT SIDE



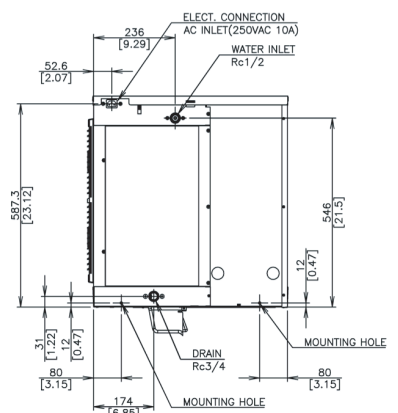
REAR SIDE



BOTTOM SIDE



BACK SIDE



KMD-201AB		
ICE DIMENSIONS (WxDxH)	38.1 x 28.5 x 12.7 mm	
DIMENSIONS (WxDxH)	560 x 625 x 610 mm	
PACKAGE DIMENSIONS (WxDxH)	668 x 727 x 783 mm	
WEIGHT (NET/GROSS)	57 KG / 73 KG	
AMPERAGE / STARTING AMPERAGE	3.0 A / 25 A	
ELECTRICAL CONSUMPTION (AT32°C/WT21°C)	663 W	
REFRIGERANT CHARGE	R404A/ 520g	
HEAT REJECTION (AT32°C/WT21°C)	1410 W (1220 kcal/h)	
ICE PRODUCTION PER 24H (15MM)	(AT10°C/WT10°C)	200 KG
	(AT21°C/WT15°C)	175 KG
	(AT32°C/WT21°C)	140 KG
ICE PRODUCTION PER CYCLE (AT32°C/WT21°C)	Approx. 3.7 KG / 416 pcs FREEZE CYCLE TIME PER CYCLE 36 minutes	
WATER CONSUMPTION PER 24H (AT32°C/WT21°C)	0.27 m ³ ≈ 1.9 L / 1 KG ice	

NOTE:

All dimensions indicated are Width x Depth x Height in mm
*60Hz units are available on request

OPERATING CONDITIONS:

• Voltage Range: 198V-254V • Ambient Temperature: 5°- 40°C • Water Supply: 7° - 35°C / 0.07 - 0.08 Mpa / 7.25-116 PSI • AC Supply Voltage: 1/220-240V / 50Hz