

## Commercial Gas Range With Under Oven

### PARAMETERS SHEET

MODEL#: TFCR-24/36-BO



**MODEL # TFCR-24-BO**

#### Feature

- Stainless steel body
- Cast Iron burner with power of 30,000BTU/H
- Cast iron grate
- **SABAF** thermostat gas valve for oven
- Oven temp range: 200°F -550°F
- Manual ignition
- Oven with enamel finishing easy to clean
- Height Adjustable leg
- With Pilot Switch

#### Choose GAS TYPE When Placing Order

- LPG**  
Liquid Propane Gas
- Town Gas**

#### Capacity

- TFCR-24-BO**  
4 burners with oven below
- TFCR-36-BO**  
6 burners with oven below

#### Standard Accessories

- Adjustable bullet leg
- Back slat with top holding shelf
- 2 pcs baking shelves/oven

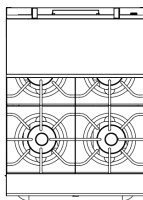
#### Optional Accessories

- Casters

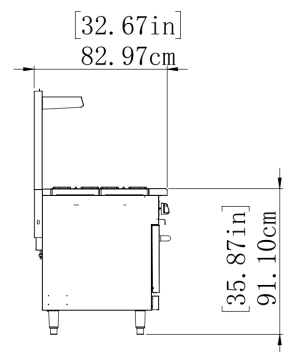
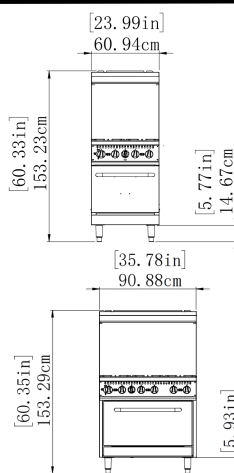
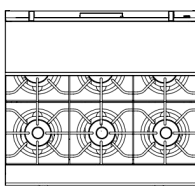
### PRODUCT DIMENSION CHART

Model: TFCR-24-BO/TFCR-36-BO

TFCR-24-BO



TFCR-36-BO



Front View

Side View

### Key Parameters

Model #	Product Dimension	Heat Power	Heating Burner	Gas Consumption:	Gas inlet Connection	N.W	G.W	Packing dimension
TFCR-24-BO	24x32.67x60.33inch 610x827x1532mm	Bumer:30,000 BTUx4 Oven:30,000 BTUx1	Burner: 4 Oven: 1	LPG: 1.699(kg/h) Town Gas: 3.946 (kg/h)	3/4" NPT Male	129kg	161.5kg	720X1010X890mm
TFCR-36-BO	36x32.67x60.33inch 915x827x1532mm	Bumer:30,000 BTUx6 Oven:30,000 BTUx1	Burner: 6 Oven: 1	LPG: 1.699(kg/h) Town Gas: 3.946 (kg/h)	3/4" NPT Male	170kg	204kg	1010X1010X890mm